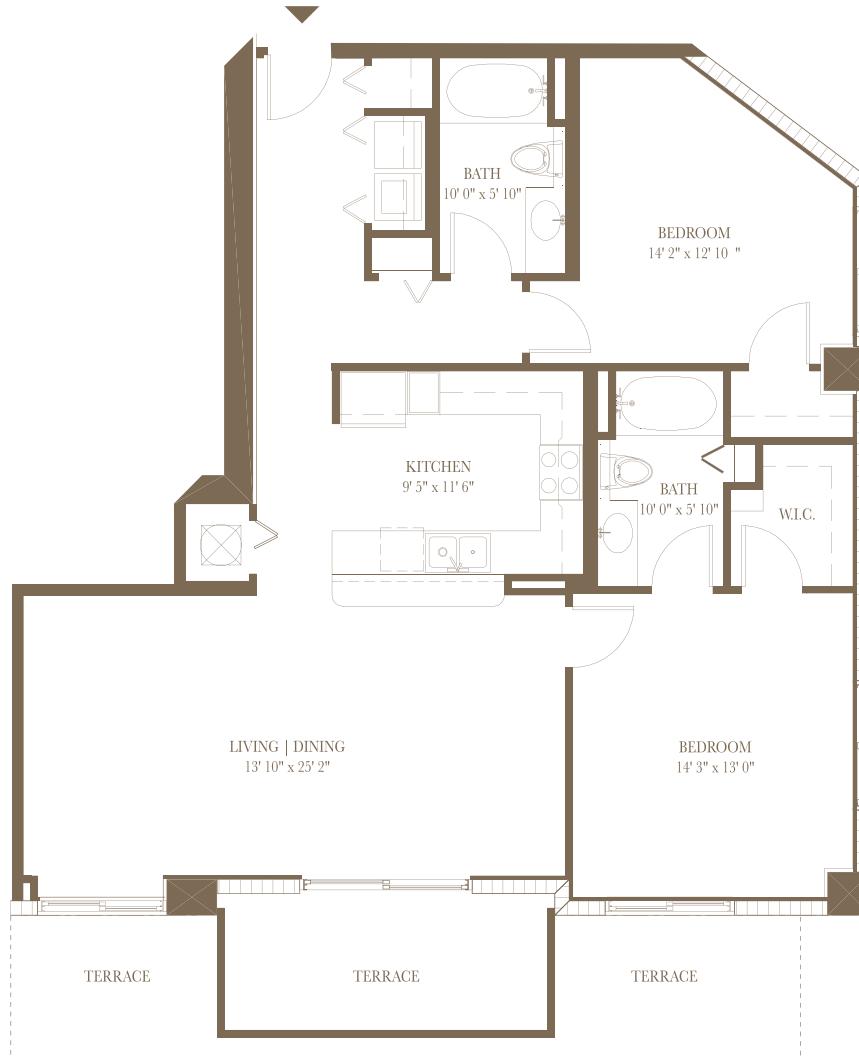


SKY Palace

AT MARY BRICKELL VILLAGE
MIAMI LUXURY CONDOMINIUMS



▲
SUNSET VIEW

▼
SUNRISE VIEW

FLOORPLAN NOT TO SCALE

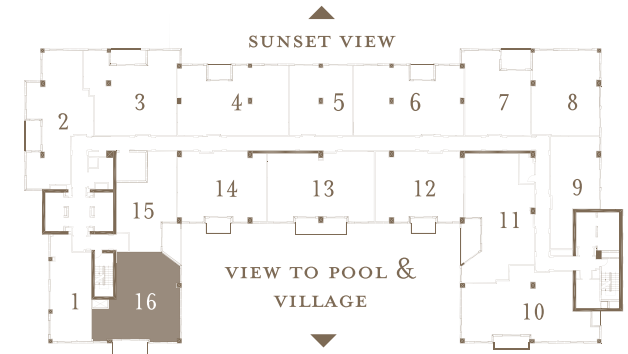


Oral representations cannot be relied upon as correctly stating the representations of developer. For correct representations, reference should be made to the documents required by section 718.503, Florida Statutes to be furnished by a developer to a buyer or lessee. This offering is made only by the prospectus or Skyline at Mary Brickell Village, a Condominium and no statement should be relied upon if not made in the prospectus. Price, plans and specifications are subject to change without notice. All illustrations are artist's representation and to not constitute a representation of any aspects of the final product. This advertisement is not an offering, nor is it an offer to sell, or solicitation of offer to buy, the condominium units in states where such offer or solicitation cannot be made. No offering can be made in New York or any other such state until an offering plan is filed with the Department of Law of the state of New York or such other applicable state. SkyPalace and SkyPalace at Mary Brickell Village are fictitious name registrations with the Florida Department of State for Skyline at Mary Brickell Village, LP.

SEVILLA

2 BEDROOM, 2 BATH

| | | |
|-----------|---------------------------------------|----------------------|
| TOTAL: | 1,519 SQ. FT. (FLOOR 18) | 141.1 M ² |
| INTERIOR: | 1,309 SQ. FT. | 121.6 M ² |
| TERRACE: | 104 SQ. FT. (FLOOR 12-15,17,19,21-30) | 9.7 M ² |
| | 112 SQ. FT. (FLOOR 16,20) | 10.4 M ² |
| | 210 SQ. FT. (FLOOR 18) | 19.5 M ² |
| | 127 SQ. FT. (FLOOR 31-33) | 11.8 M ² |



Your Kingdom Awaits