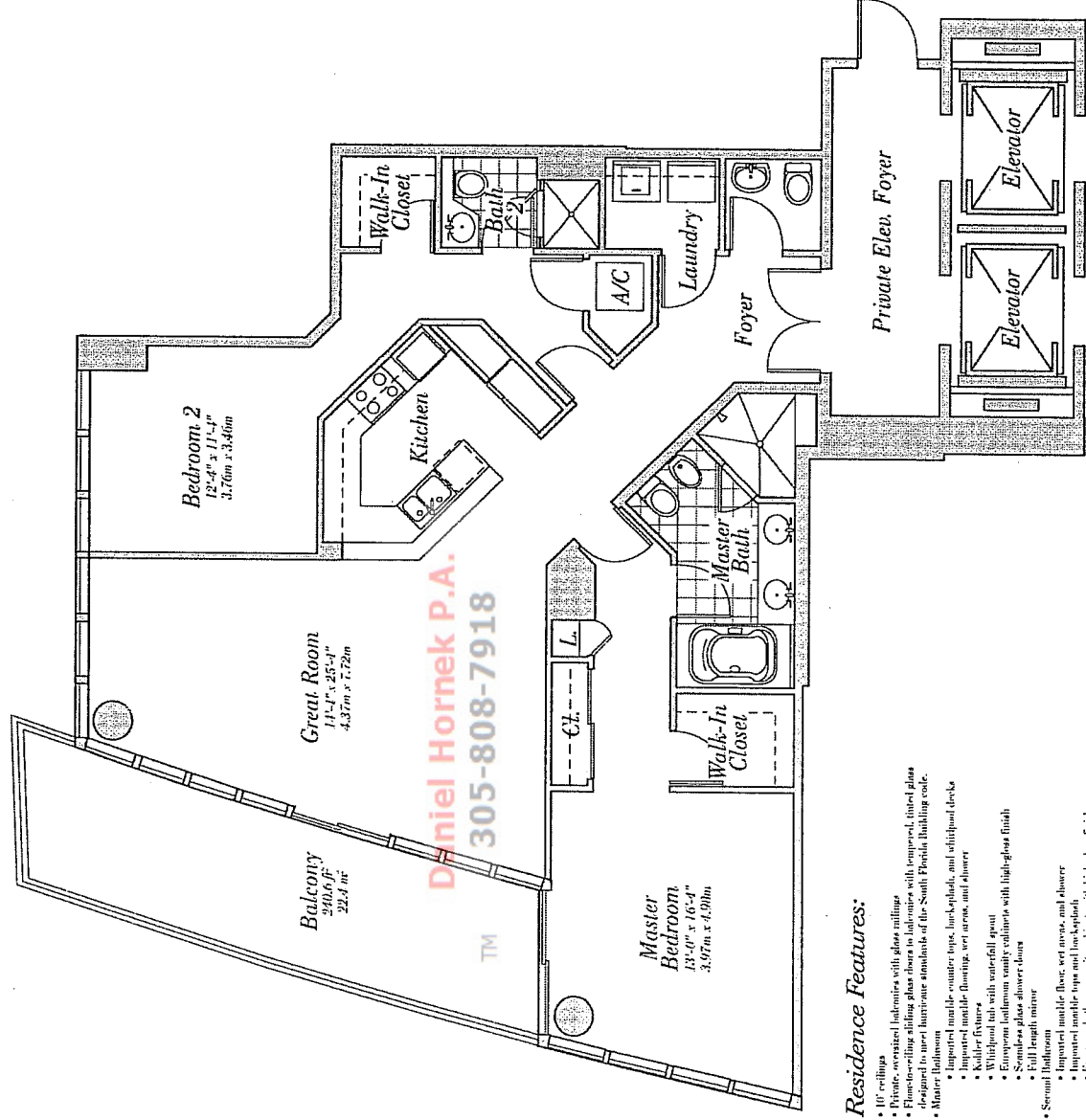


# Residence 01

Floors 5-29

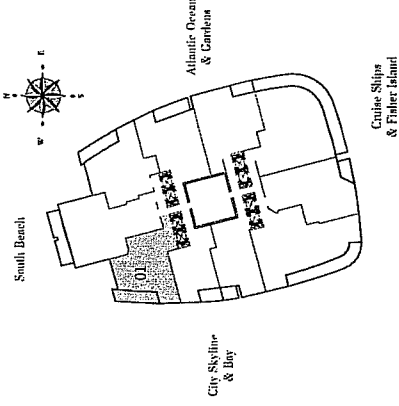
2 Bedrooms, 2 Baths, Powder Room  
1,591 s.f. 147.9m<sup>2</sup>



Daniel Hornek P.A.  
305-808-7918

### Residence Features:

- 10' ceilings
- Private, oversized lockers with glass millings
- Flame-retardant sliding glass doors to lockers with tempered, tinted glass designed to meet hurricane standards of the South Florida Building code.
- Master Bedroom
  - Impressed marble counter tops, backsplash, and whirlpool deck
  - Impressed marble flooring, wet areas, and shower
  - Walk-in closet
  - Walk-in tub with waterfall spout
- European bathroom vanity cabinets with high-gloss finish
- Seamless glass shower door
- Full length mirror
- Second bathroom
  - Impressed marble floor, wet areas, and shower
  - Impressed marble tops and lockers
  - European bathroom vanity cabinets with high-gloss finish
  - Glass enclosure for shower stall
- Powder Room
  - Kallor fixtures
- Potential Risk
- Kitchen
  - Custom, imported European cabinetry
  - Granite counter tops and backsplash
  - Under counter lighting
  - Variable speed, recirculating range hood
  - Subzero 40" built-in refrigerator-freezer
  - Built-in microwave oven
  - Kitchen sink with stainless steel
  - Wine chiller in select residences
  - Single-lever faucet with pull-out spray
- Laundry
  - Maytag Neptune front-load washer
  - Maytag Neptune front load electric dryer
- Pre-wiring for multiple telephone lines
- Pre-wiring for cable TV
- 4" thick one-way wood entry doors
- Split-core wood interior doors



CONTINUUM  
ON SOUTH BEACH

Daniel Hornek P.A.  
305-808-7918

TM