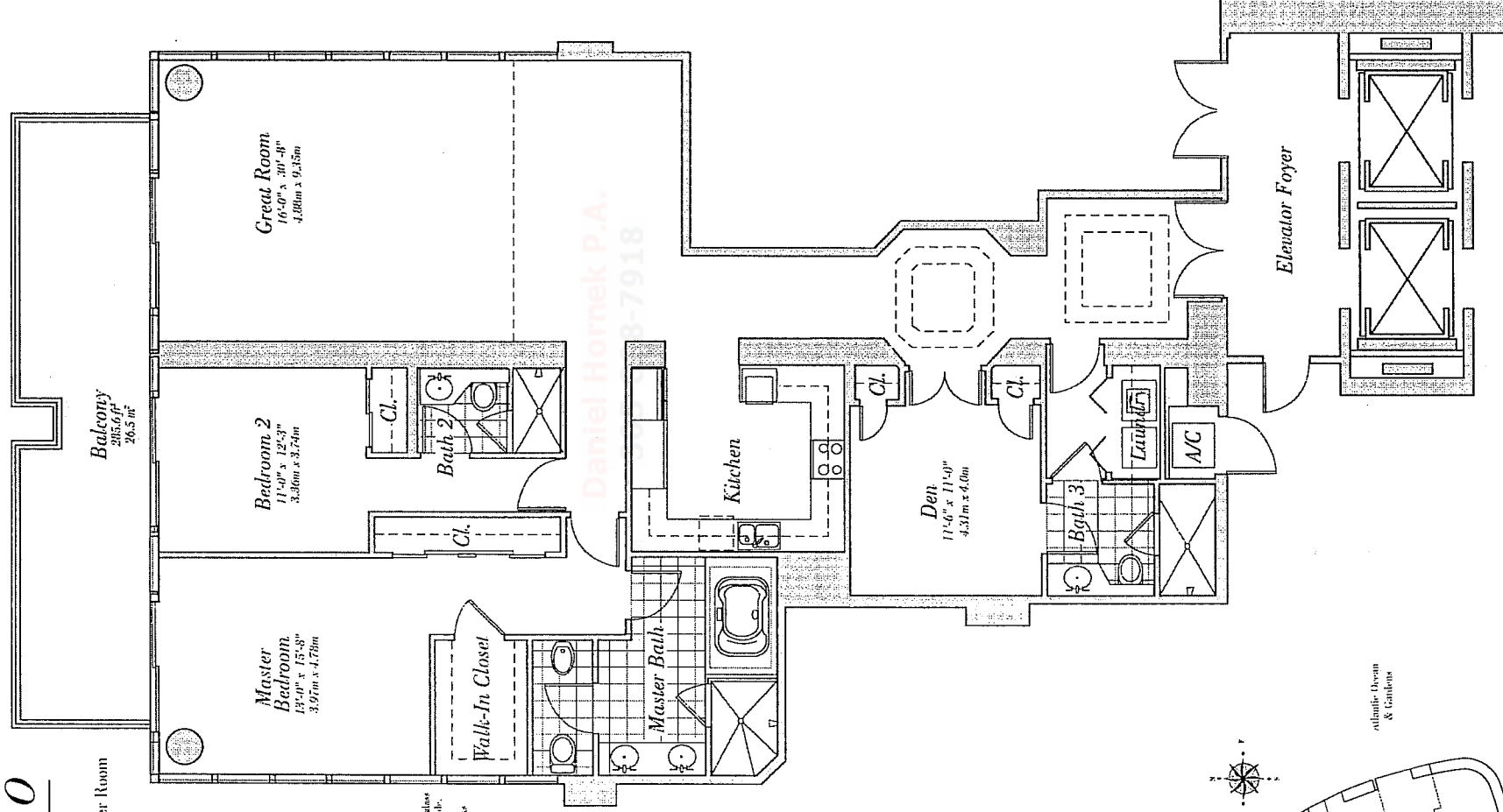


Floors 5-29

2 Bedrooms & Den, 2 Baths, Powder Room

2,122 s.f. 197.2 m²

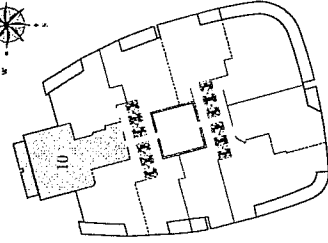
Residence Features:

- 10" ceilings
- Private, oversized balconies with glass railings
- Floor-to-ceiling sliding glass doors to balconies with tempered, tinted glass designed to meet hurricane standards of the South Florida Building code.
- Master Bedroom
 - Inlaid marble counter tops, backplash, and tub/shower decks
 - Kähler fixtures
 - Walk-in tub with water-fall spout
 - European bathroom vanity cabinets with high-gloss finish
 - Separate linen closet
 - Full length mirror
- Second Bedroom
 - Inlaid marble floor, wet areas, and shower
 - Inlaid marble tops and backplash
 - European bathroom vanity cabinets with high-gloss finish
 - Glass enclosure for shower stalls
- Powder Room
 - Kähler fixtures
 - Porcelain sink
- Kitchen
 - Custom, inlaid European cabinetry
 - Granite countertop and backplash
 - Upper-counter lighting
 - Variable speed, recirculating range hood
 - Sub-zero 48" built-in refrigerator/freezer
 - Middle touch-control cooktop
 - Middle electric conventional oven
 - Wide integrated dishwasher
 - Kitchen sink full-size microwave oven
 - Slab-top built-in coffee maker
 - Slab-top built-in wine cooler
 - Slab-top built-in trash can
- Laundry
 - Maytag Neptune front-load washer
 - Maytag Neptune front load electric dryer
- Pre-wiring for multiple telephone lines
- Pre-wiring for cable-TV
- Full roll-up sound entry doors
- Solid-core wood interior doors

CONTINUUM ON SOUTH BEACH



South Beach

City Skyline
& BayOcean Drive
& GardensCruise Ships
& Fisher Island