

# Residence 12

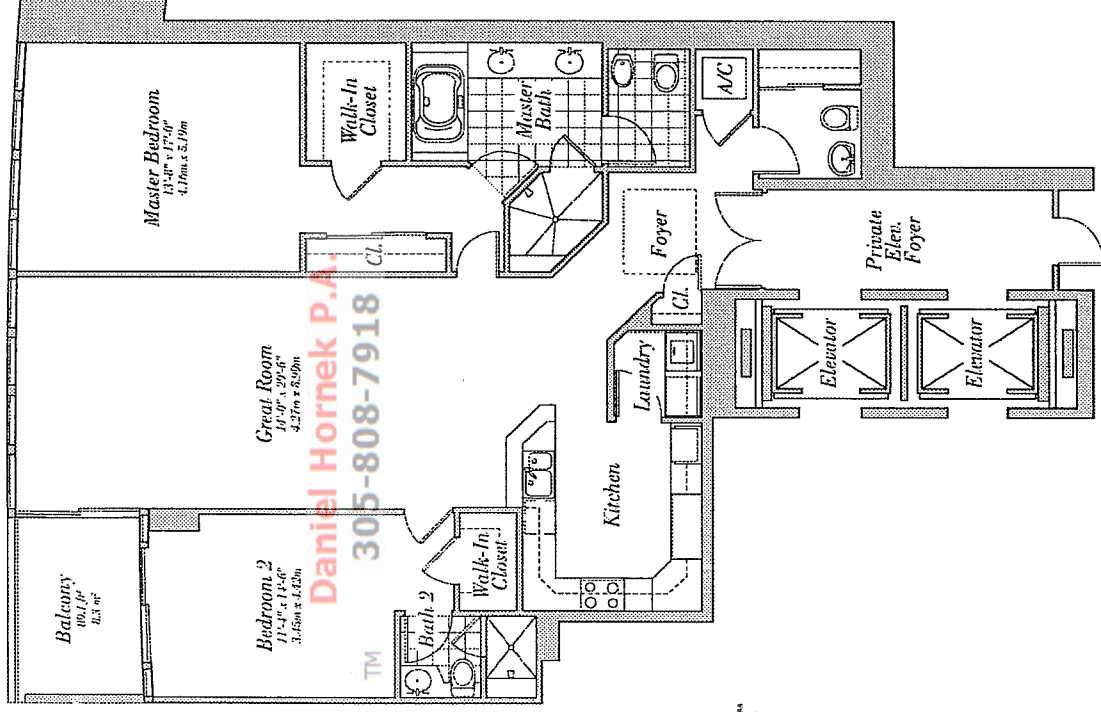
Floors 30-39

2 Bedroom, 2 Bath, Powder Room  
1,791 s.f. 166.4 m<sup>2</sup>

**Daniel Hornek P.A.**

**305-808-7918**

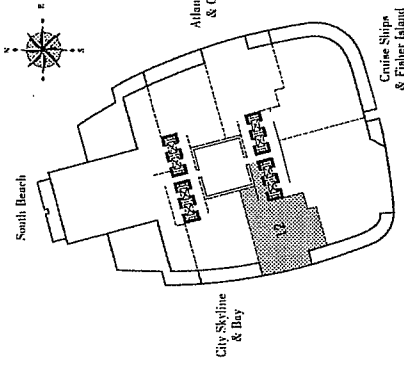
TM



**Daniel Hornek P.A.**  
**305-808-7918**

### Residence Features:

- 10' ceilings
- Impact resistant windows with glass railings
- Floor-to-ceiling sliding glass doors in balconies with tempered, tinted glass designed to meet hurricane standards of the South Florida Building code.
- Master Bedroom
  - Impact resistant counter tops, backsplash, and whirlpool decks
  - Impact resistant marble flooring in wet areas and shower
  - Kohler fixtures
  - Whirlpool tub with waterfall spout
  - European bathroom vanity cabinets with high-gloss finish
  - Seamless glass shower doors
  - Full length mirror
- Second Bathroom
  - Impact resistant flooring in wet areas and shower
  - Impact resistant marble tops and backsplash
  - European bathroom vanity cabinets with high-gloss finish
  - Glass enclosure for shower stalls
- Powder Room
  - Kohler fixtures
  - Pedestal sink
- Kitchen
  - Custom, impact resistant European cabinetry
  - Granite countertops and glass backsplash
  - Under-counter lighting
  - Variable speed, recirculating range hood
  - Sub-zero 48" built-in refrigerator-freezer
  - Middle touch-resistant cooktop
  - Middle electric convectional oven
  - Middle integrated dishwasher
  - Dishwasher with triple-rack interior
  - Wine chiller in cabinet coolers
  - Single-lever faucet with pull-out spray
- Laundry
  - Maytag Neptune front-load washer
  - Maytag Neptune front load electric dryer
- Pre-wiring for multiple telephone lines
- Pre-wiring for cable-TV
- 10' solid-core wood entry doors
- Solid-core wood interior doors



**CONTINUUM**  
ON SOUTH BEACH