

Residence 13

Floors 30-35

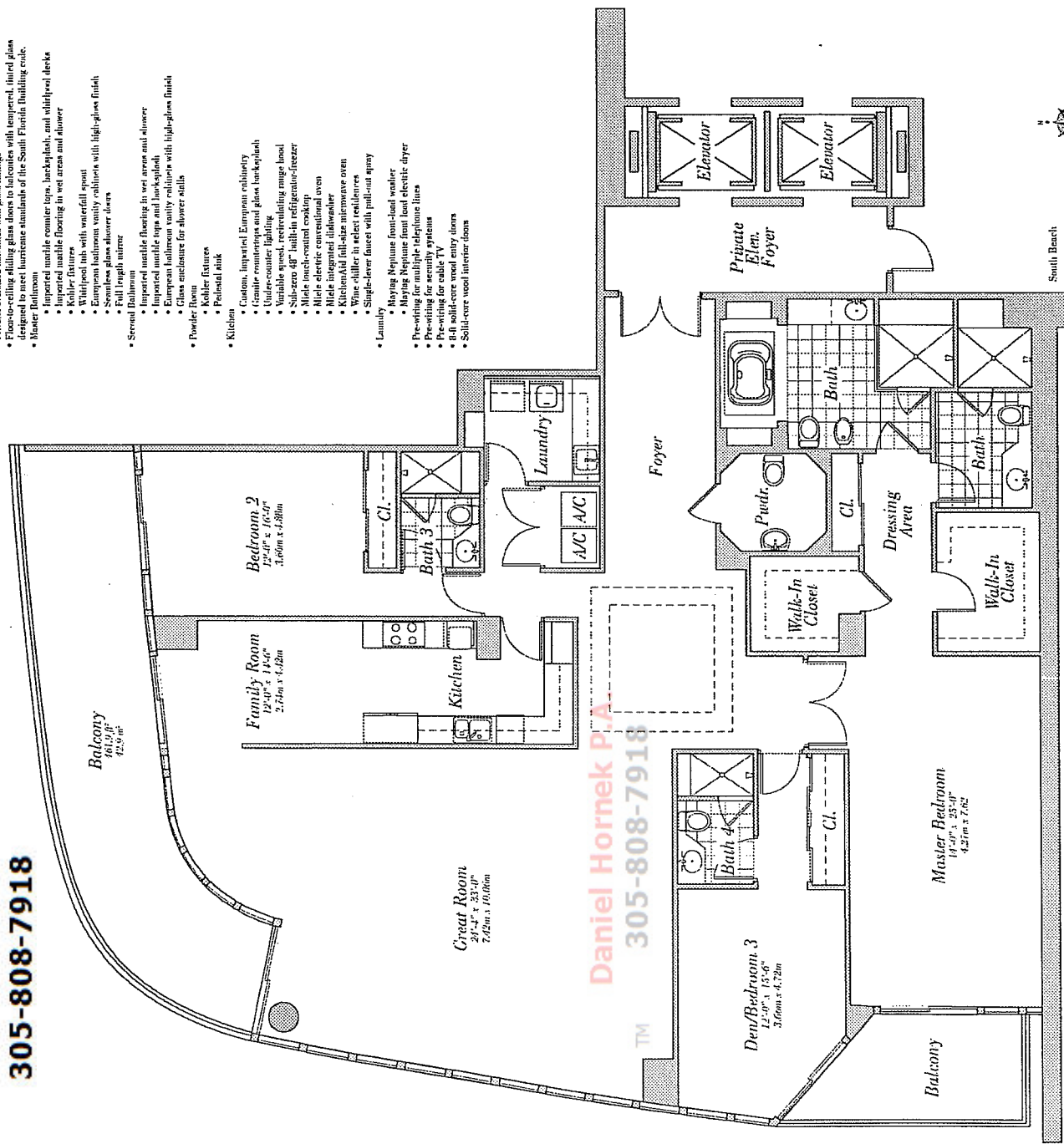
3 Bedroom, 4 Bath, Powder Room
3,335 s.f. 309.9 m²

Daniel Hornek P.A.
305-808-7918

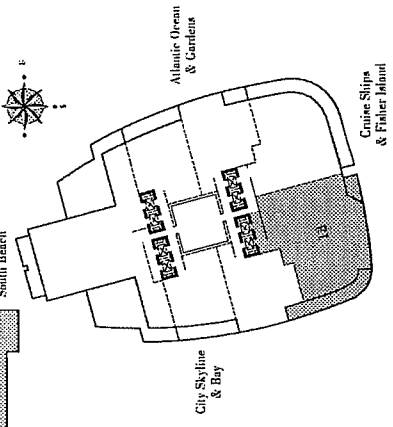
TM

Residence Features:

- 10' ceilings
- Private, oversized balconies with glass railings
- Floor-to-ceiling sliding glass doors to balconies with tempered, tinted glass designed to meet hurricane standards of the South Florida Building code.
- Master Bathroom
 - Impaired marble counter tops, backsplash, and vitrolite decks
 - Impaired marble flooring in wet area and shower
 - Kneeling toilet
 - Walk-in tub with waterfall spout
 - European bathroom vanity cabinets with high-gloss finish
 - Seamless glass shower doors
 - Full length mirror
- Servant Bathroom
 - Impaired marble flooring in wet area and shower
 - Impaired marble tops and backsplash
 - European bathroom vanity cabinets with high-gloss finish
 - Glass enclosure for shower stalls
- Powder Room
 - Toilet fixture
 - Pedestal sink
- Kitchen
 - Custom, Imperial, European cabinetry
 - Granite countertops and glass backsplash
 - Under-counter lighting
 - Variable speed, retracting range hood
 - Sub-zero 48" built-in refrigerator-freezer
 - Multiple built-in cooktop
 - Multiple electric conventional oven
 - Multiple integrated dishwasher
 - KitchenAid full-size microwave oven
 - Wine chiller in select residences
 - Single-lever faucet with pull-out spray
- Laundry
 - Heavy Neptune front-load washer
 - Heavy Neptune front-load electric dryer
 - Pre-wiring for multiple telephone lines
 - Pre-wiring for security system
 - Pre-wiring for cable TV
 - Built solid-core wood entry doors



Daniel Hornek P.A.
305-808-7918



CONTINUUM
ON SOUTH BEACH