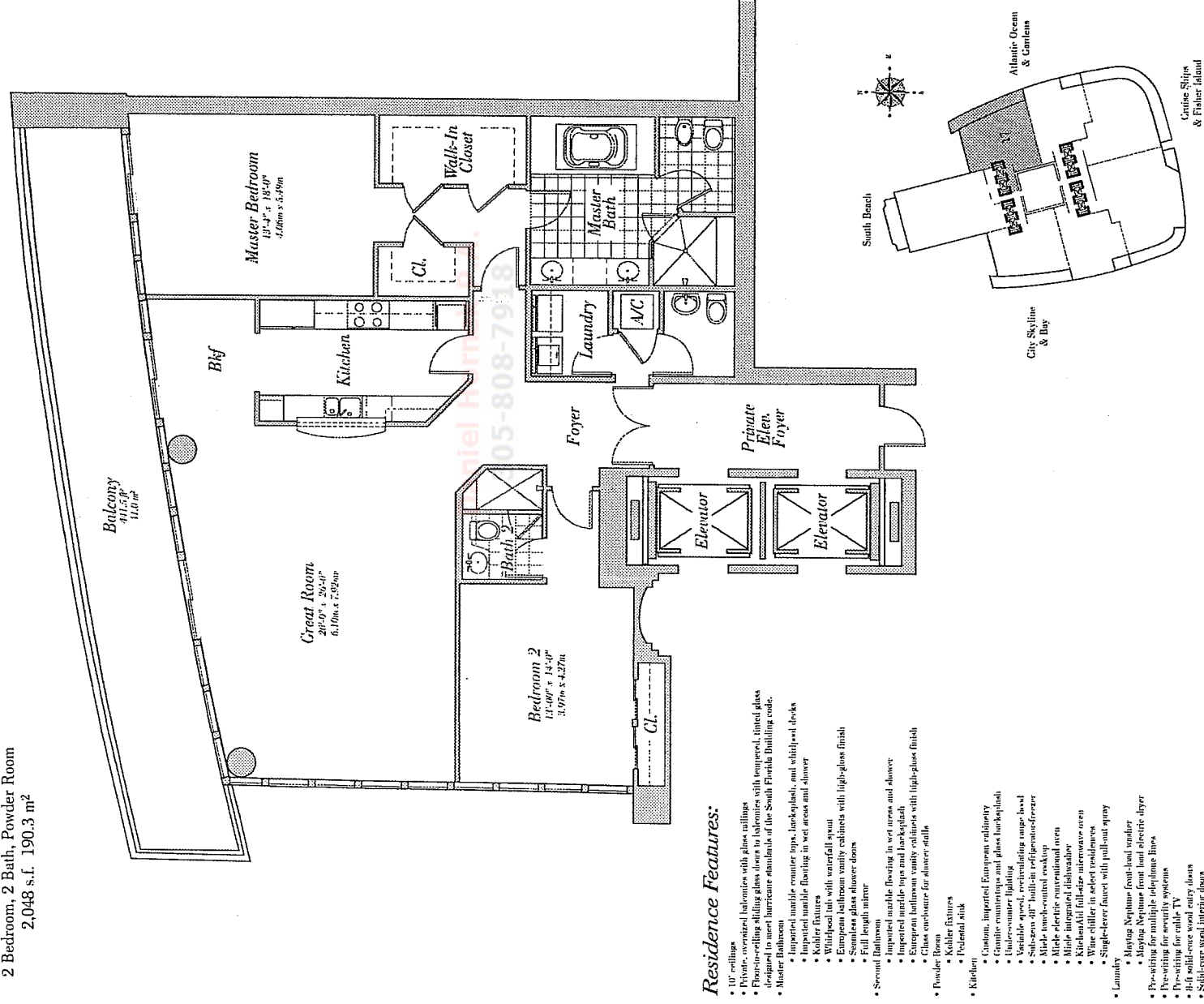


Floors 31-39

2 Bedroom, 2 Bath, Powder Room  
 2,048 s.f. 190.3 m<sup>2</sup>



**Residence Features:**

- 10' ceilings
- Private oversized balconies with glass railings
- Private oversized sliding glass doors to balconies with sequential tinted glass designed to meet hurricane standards of the South Florida Building code.
- Master Bathroom
  - Imported marble counter tops, backplash, and white tile decks
  - Kohler fixtures
  - Whirlpool tub with waterfall spout
  - European bathroom vanity cabinets with high-gloss finish
  - Seamless glass shower doors
  - Full length mirror
- Second Bathroom
  - Imported marble flooring in wet areas and shower
  - Imported marble tops and backplash
  - European bathroom vanity cabinets with high-gloss finish
  - Glass enclosure for shower area
- Powder Room
  - Kohler fixtures
  - Pedestal sink
- Kitchen
  - Custom imported European cabinetry
  - Granite countertops and glass backplash
  - Under-counter lighting
  - Variable speed, recirculating range hood
  - Subzero 48" built-in refrigerator-freezer
  - Built-in double oven
  - Multiple electric cupboards
  - Multiple electric dishwashers
  - Built-in full size oven
  - Wine chiller in select residences
  - Single-lever faucet with pull-out spray
- Laundry
  - Maytag Neptune front-load washer
  - Maytag Neptune front load electric dryer
- Pre-wiring for multiple telephone lines
- Pre-wiring for security systems
- Built solid-wood entry doors
- Solid-wood interior doors

**CONTINUM**  
 ON SOUTH BEACH