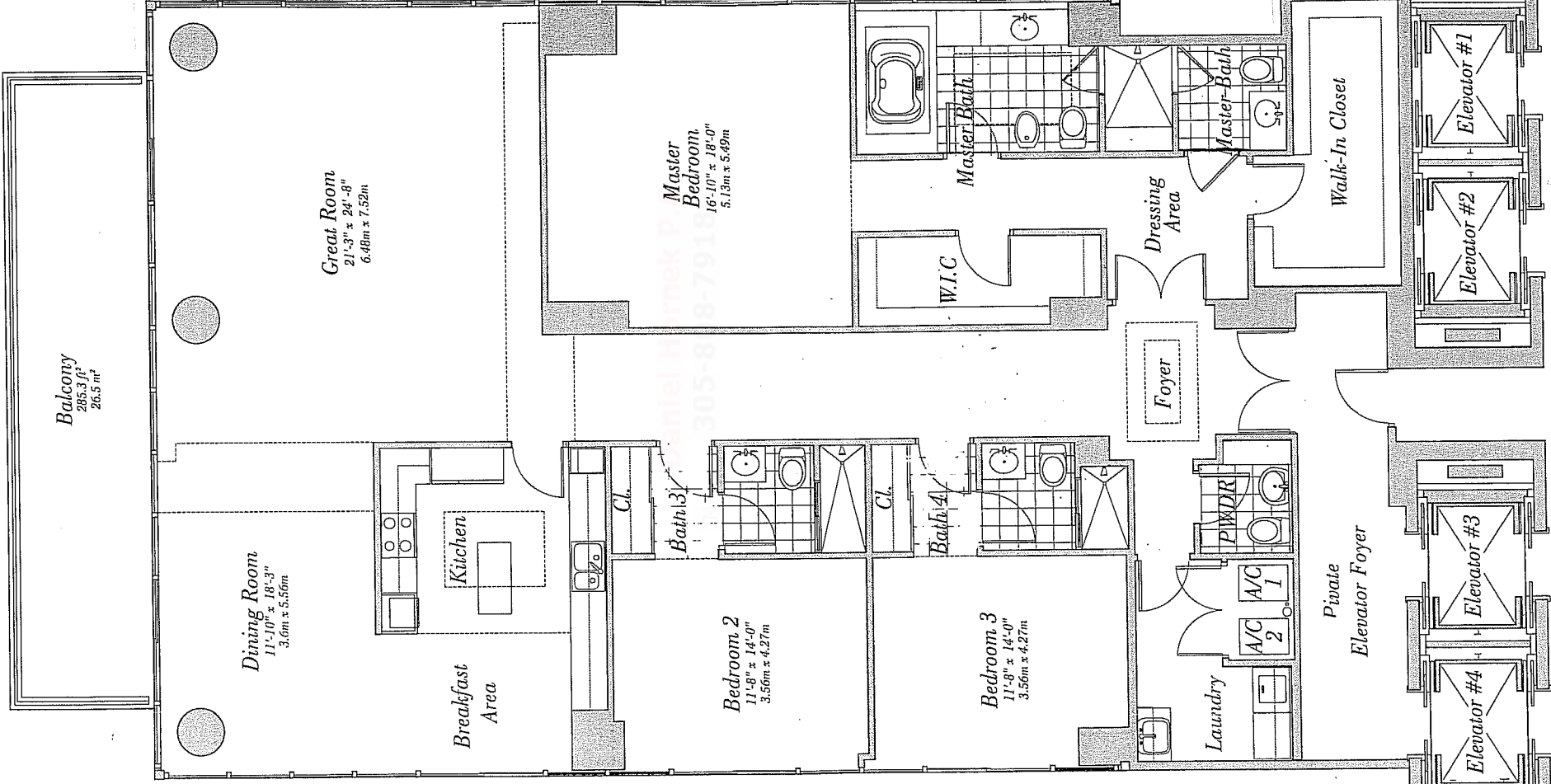


Floors 31-39

3 Bedroom, 4 Bath, Powder Room
 2,954 s.f. 274.53 m²



Residence Features:

- 10' ceilings
- Private, covered balconies with glass railings
- Private, covered parking garage with 2 spaces, with temporary, limited glass
- Private, glass sliding glass doors to the balcony with temporary, limited glass
- Designed to meet hurricane standards of the South Florida Building code.
- Master Bedroom
 - Imported marble flooring in wet areas and shower
 - Kohler fixtures
 - Whirlpool tub with waterfall spout
 - European bathroom vanity cabinets with high-gloss finish
 - Seamless glass shower doors
 - Full length mirror
- Second Bathroom
 - Imported marble flooring in wet areas and shower
 - Imported marble top and back splash
 - European bathroom vanity cabinets with high-gloss finish
 - Glass enclosure for shower stalls
- Powder Room
 - Kohler fixtures
- Kitchen
 - Custom, imported European cabinetry
 - Granite countertop and glass back splash
 - Under-counter lighting
 - Variable speed, recirculating range hood
 - Sub-zero 48" built-in refrigerator-freezer
 - Single built-in cooktop
 - Built-in electric conventional oven
 - Built-in integrated dishwasher
 - Wine cooler with pull-out door
 - Wine cooler in select cabinet
 - Wine cooler in select cabinet
 - Single-lever faucet with pull-out spray
- Laundry
 - Maytag Neptune front-load washer
 - Maytag Neptune front load electric dryer
- Pre-wiring for multiple telephone lines
- Pre-wiring for security system
- Pre-wiring for cable TV
- 8-ft solid-core wood entry doors
- Solid-core wood interior doors