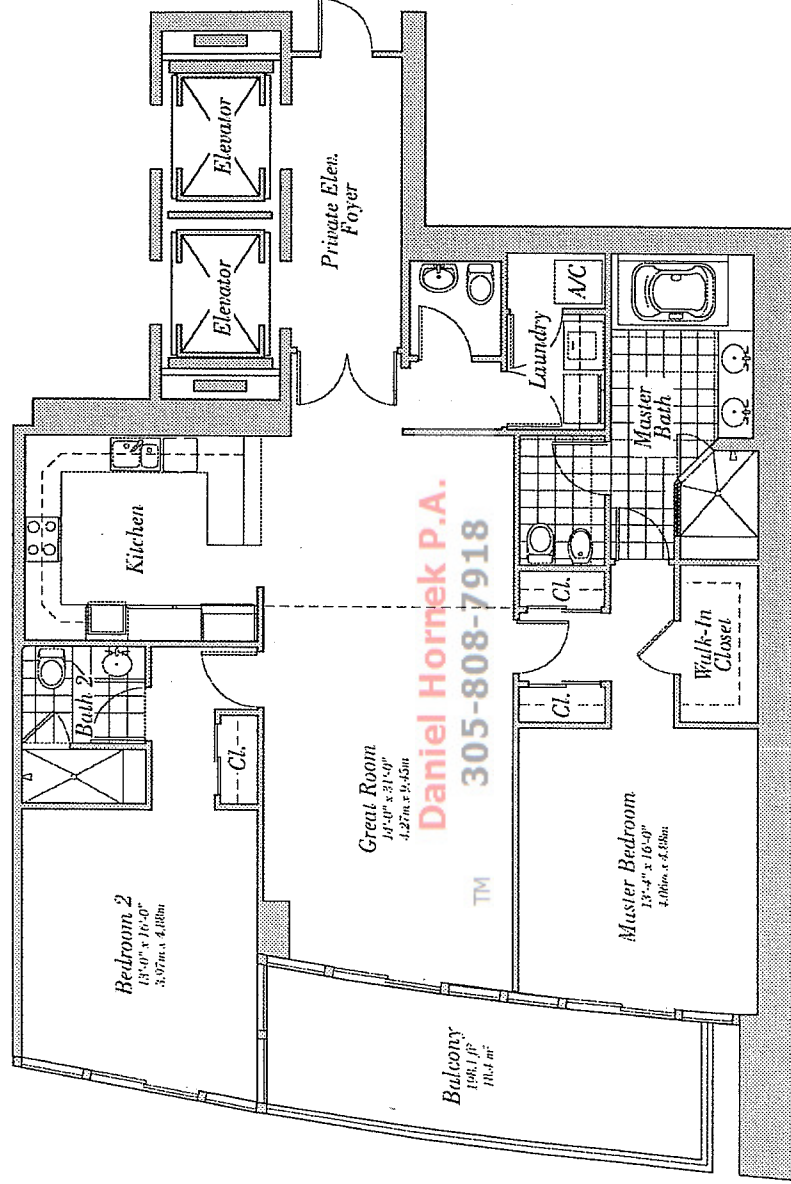


Floors 27-29

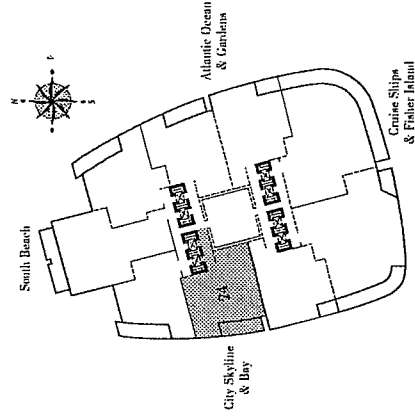
2 Bedroom, 2 Bath, Powder Room
 1,735 s.f. 161.2 m²



Daniel Hornek P.A.
305-808-7918

Residence Features:

- 10' ceilings
- Private oversized balconies with glass railings
- Floor-to-ceiling sliding glass doors to balconies with tempered, tinted glass designed to meet hurricane standards of the South Florida Building code.
- Master Bedroom
 - Imported marble counter tops, backsplashes, and whitewood decks
 - Imported marble flooring in wet areas and shower
 - Kohler fixtures
 - Whirlpool tub with waterfall spout
 - European bathroom vanity cabinets with high-gloss finish
 - Seamless glass shower doors
 - Full length mirror
- Second Bathroom
 - Imported marble flooring in wet areas and shower
 - Imported marble tops and backsplashes
 - European bathroom vanity cabinets with high-gloss finish
 - Glass enclosure for shower stalls
- Powder Room
- Kitchen
 - Potent sink
 - Kitchen
 - Custom, imported European cabinetry
 - Granite countertops and glass backsplash
 - Under-counter lighting
 - Variable speed, recirculating range hood
 - Side-zero 36" built-in refrigerator/drawer
 - Triple touch-remote cooking
 - Microwave combination oven
 - Multiple stainless steel kitchen appliances
 - KitchenAid full-size microwave oven
 - Wine chiller in select residences
 - Single-lever faucet with pullout spray
- Laundry
 - Maytag Neptune front-load washer
 - Maytag Neptune front load electric dryer
 - Pre-wiring for multiple telephone lines
 - Pre-wiring for cable TV
 - Lift call/covers wood entry doors
 - Solid-core wood interior doors



CONTINUUM
 ON SOUTH BEACH