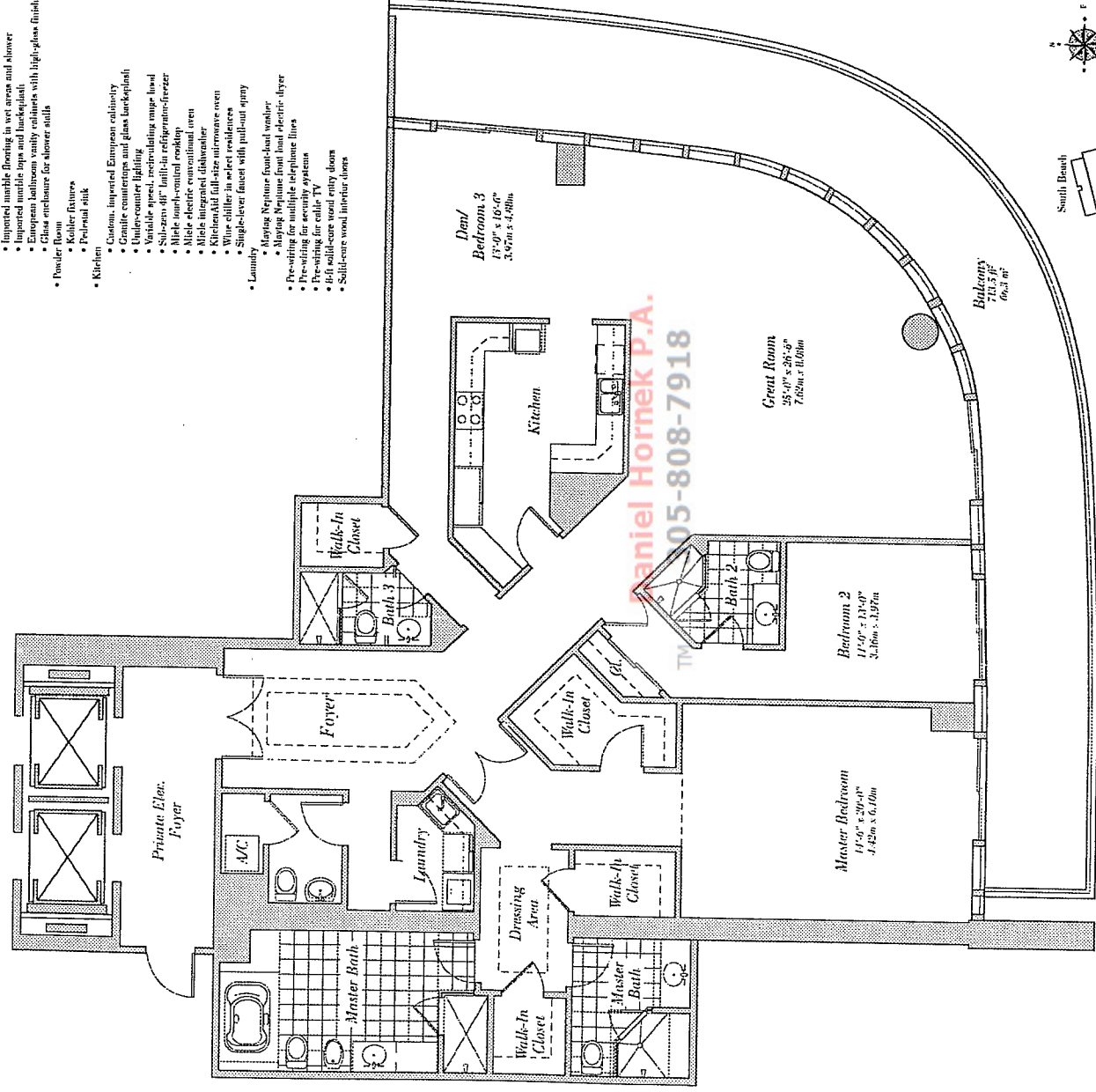


Floors 27-29

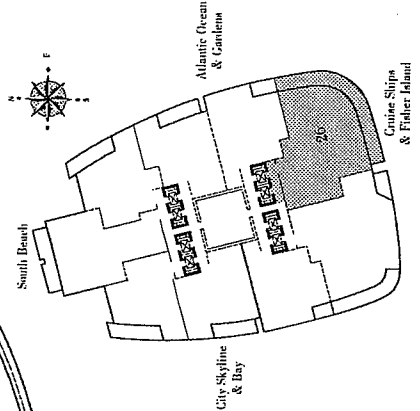
2 Bedroom, 1 Den/Bedroom, 4 Bath, Powder Room  
 2,847 s.f. 264.6 m<sup>2</sup>

**Residence Features:**

- 10' ceilings
- Private, covered balconies with glass railings
- Private, recessed lighting glass doors to terraces with tempered, tinted glass designed to meet hurricane standards of the South Florida Building Code.
- Master Bedroom
- Imported marble flooring in wet areas and shower
- Kohler fixtures
- Whirlpool tub with waterfall spout
- European bathroom vanity cabinets with high-gloss finish
- Seamless glass shower doors
- Full length mirror
- Second Bathroom
- Imported marble flooring in wet areas and shower
- Imported marble tops and backsplash
- European bathroom vanity cabinets with high-gloss finish
- Glass enclosure for shower stall
- Powder Room
- Kohler fixtures
- Pedestal sink
- Kitchen
- Custom, imported European cabinetry
- Granite countertops and glass backsplash
- Under-counter lighting
- Variable speed, recirculating range hood
- Side-by-side 48" built-in refrigerator-freezer
- Electric cooktop
- Electric over-the-range oven
- Stainless steel appliances
- Walk-in full-size microwave oven
- Walk-in pantry
- Single-lever faucet with pull-out spray
- Laundry
- Maytag Neptune front-load washer
- Maytag Neptune front load electric dryer
- Pre-wiring for multiple telephone lines
- Pre-wiring for cable TV
- 10-ft solid-core wood entry doors
- Solid-core wood interior doors



Daniel Hornek P.A.  
 305-808-7918



**CONTINUUM**  
 ON SOUTH BEACH