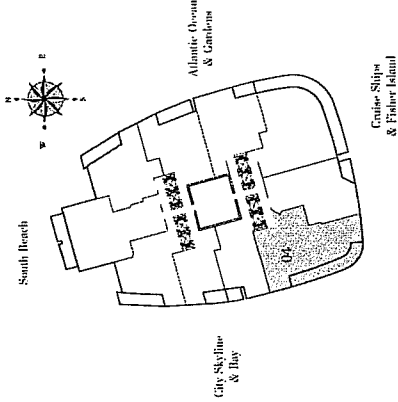
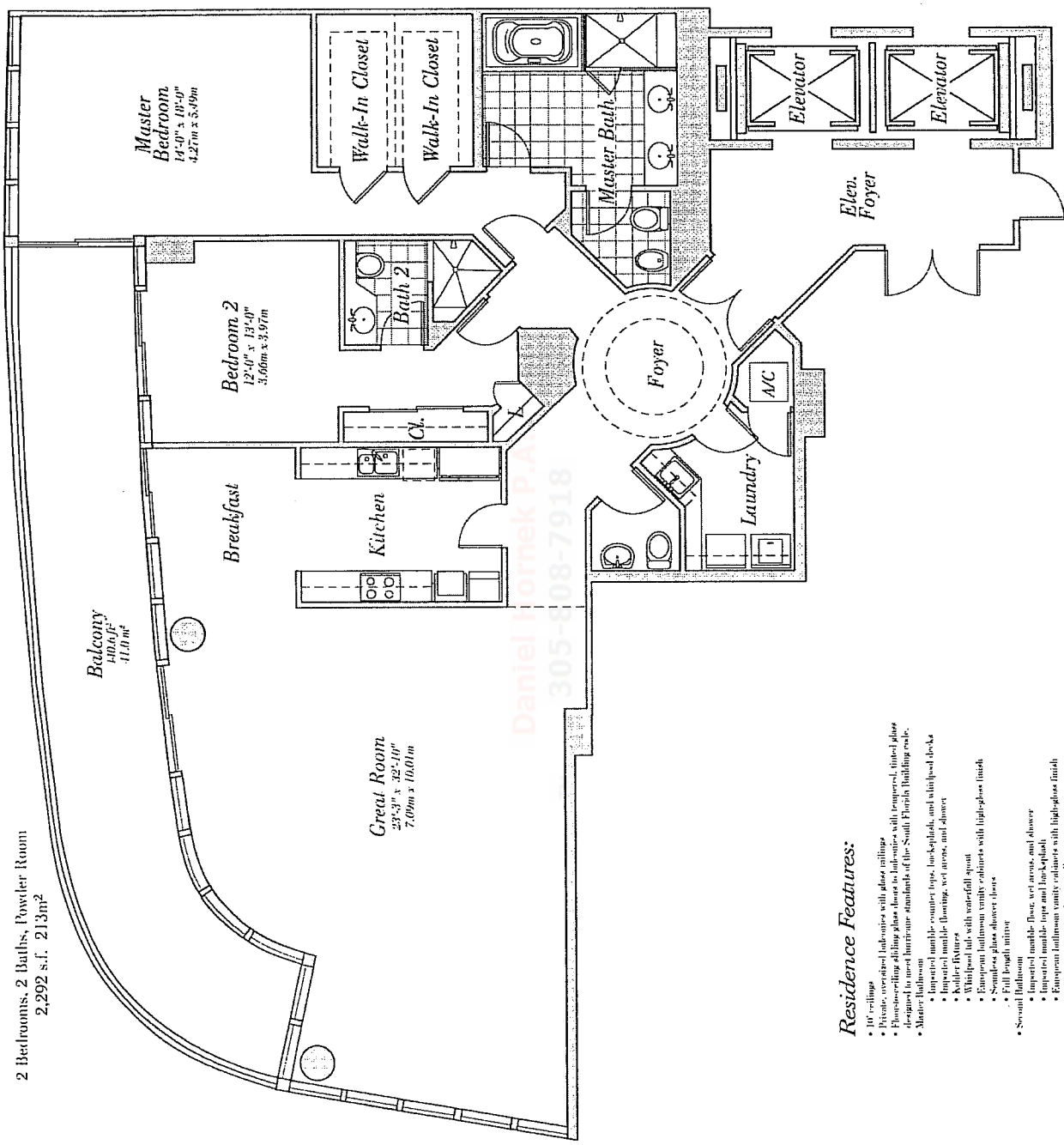


*Residence 04*

Floors 5-26

2 Bedrooms, 2 Baths, Powder Room  
2,292 s.f. 213m<sup>2</sup>



**Residence Features:**

- 10' ceilings
- Picture size arched balconies with glass railings
- Floor-to-ceiling sliding glass doors to balconies with tempered, tinted glass designed to meet hurricane standards of the South Florida Building code.
- Master Bedroom
  - Impacted marble counter tops, back-splash, and whirlpool decks
  - Impacted marble flooring, wet areas, and shower
  - Kohler fixtures
  - Whirlpool tub with waterfall spout
  - European full-motion vanity cabinets with high-gloss finish
  - Solid-surface shower doors
  - Full-spread mirrors
- Several balconies
  - Impacted marble floor, wet areas, and shower
  - Impacted marble tops and back-splash
  - European full-motion vanity cabinets with high-gloss finish
  - Glass enclosure for shower stalls
- Powder Room
  - Kohler fixtures
- Kitchen
  - Custom, impacted European cabinetry
  - Impact-resistant backsplash and back-splash
  - Under-cabinet lighting
  - Variable speed, refrigerating range hood
  - Subzero 48" built-in refrigerator-drawer
  - Miele hood-control cooktop
  - Miele electric conventional oven
  - Miele integrated dishwasher
  - KitchenAid full-size microwave oven
  - Wine-chiller in select residences
  - Single-door pantry with pull-out open
- Laundry
  - Miele Maxing Neptune front-load electric dryer
- Pre-wiring for multiple telephone lines
- Pre-wiring for security systems
- Pre-wiring for cable TV
- Built-in-charge stand entry doors
- Solid-core wood entry doors

**CONTINUUM**  
ON SOUTH BEACH