

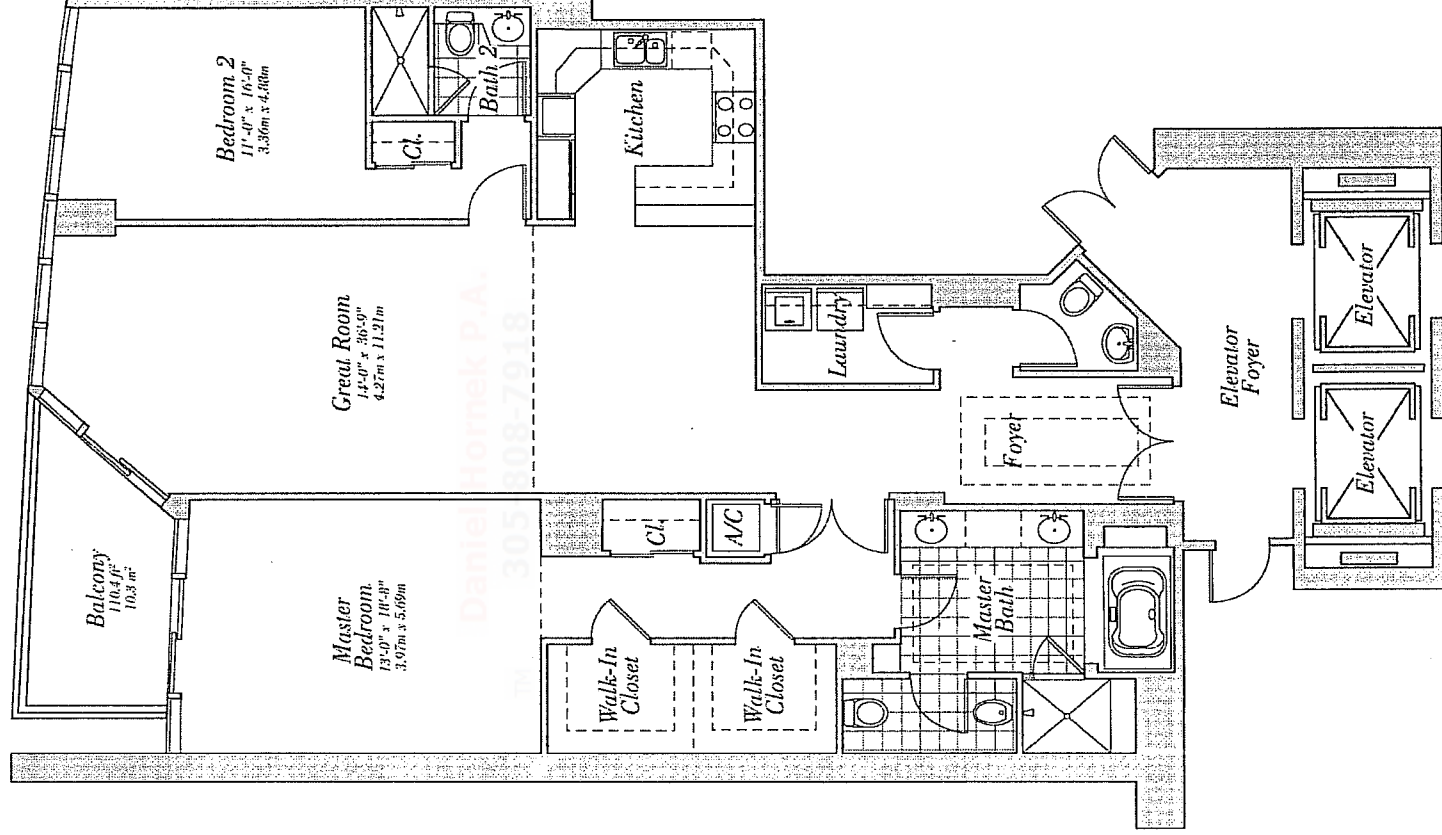
Residence 05

Floors 5-26

2 Bedrooms, 2 Baths, Powder Room
1,869 s.f. 173.7m²

Daniel Hornek P.A.
305-808-7918

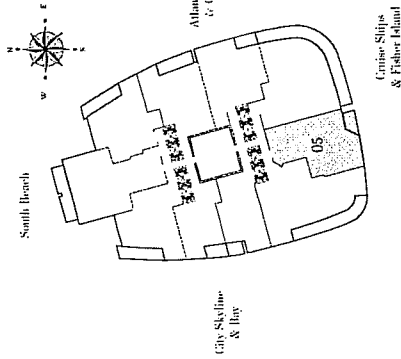
TM



Residence Features:

- 10' ceilings
- Granite countertops and backsplashes
- Floor-to-ceiling glass sliding doors with integrated, tinted glass doors for privacy and hurricane resistance at the South Florida Building code.
- Master Bedroom
 - Imported marble counter tops, back splash, and whirlpool deck
 - Kohler fixtures
 - Whirlpool tub with waterfall spout
 - Imported marble top and back splash
 - Seamless glass shower doors
 - Full length mirror
- Second Bathroom
 - Imported marble floor, wet areas, and shower
 - Kohler fixtures
 - European bathroom vanity cabinets with high-gloss finish
 - Glass enclosure for shower and tub
- Powder Room
 - Glass enclosure for shower and tub
 - Kohler fixtures
 - Pedestal sink
- Kitchen
 - Custom, imported European cabinetry
 - Granite countertops and back splash
 - Stainless steel appliances
 - Variable speed Levitrol® rotating range hood
 - Sub-zero 40" built-in refrigerator/freezer
 - Mark II touch-control washing
 - Mark II electric conventional oven
 - Mark II integrated dishwasher
 - KitchenAid full-size microwave oven
 - Wine chiller in select residences
 - Single-level finish with pull-out pantry
- Laundry
 - Mark II stainless front-load washer
 - Mark II stainless front load electric dryer
- Pre-wiring for security systems
- Pre-wiring for cable TV
- Bid solid-core wood entry doors
- Solid-core wood interior doors

CONTINUUM
ON SOUTH BEACH



City Skyline & Bay

Atlantic Ocean & Gardens