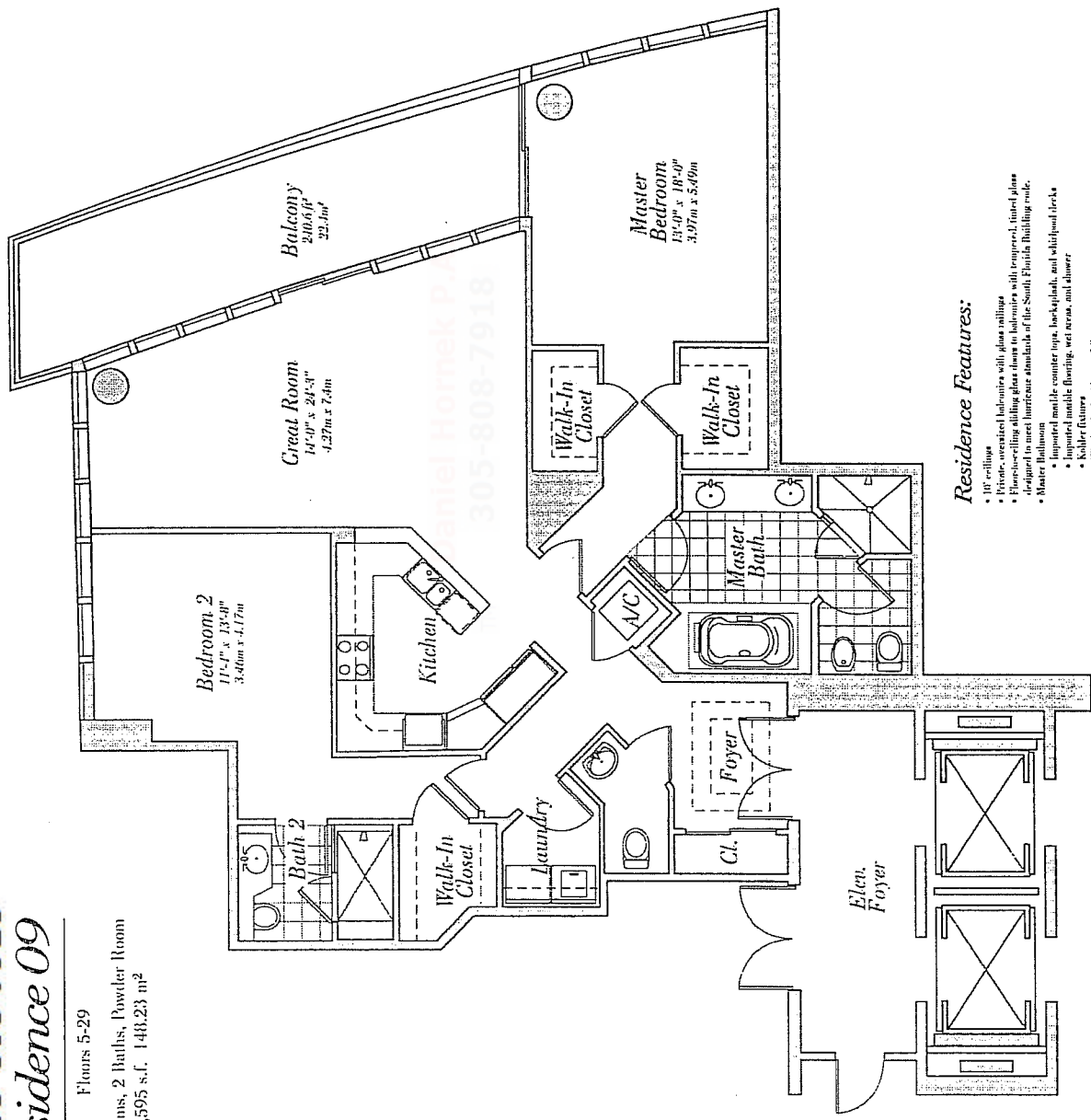


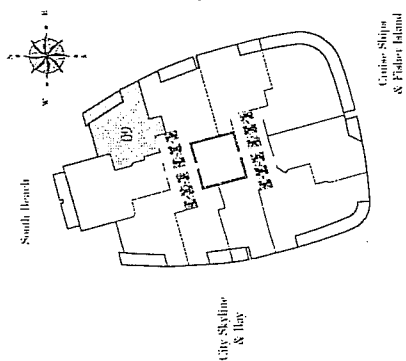
Floors 5-29

2 Bedrooms, 2 Baths, Powder Room
 1,595 s.f. / 148.23 m²



Residence Features:

- 10' ceilings
- Private, oversized balconies with glass railings
- Floor-to-ceiling sliding glass doors in bedrooms with tempered, tinted glass
- Designed to meet hurricane standards of the South Florida Building code.
- Master bathroom
 - Impregnable, moisture, counter tops, back splash, and whirlpool jets
 - Impregnable marble flooring, wet areas, and shower
 - Kohler fixtures
 - Walk-in tub with waterfall spout
 - European bathroom vanity cabinets with high-gloss finish
 - Scumblex glass shower doors
 - Full length mirror
- Second bathroom
 - Impregnable marble floor, wet areas, and shower
 - Impregnable marble top and back splash
 - European bathroom vanity cabinets with high-gloss finish
 - Glass enclosure for shower stalls
- Powder Room
 - Kohler fixtures
- Kitchen
 - Granite, impregnable European cabinetry
 - Granite countertops and back splash
 - Under-cabinet lighting
 - Variable speed, venting/hood range hood
 - Subzero 40" built-in refrigerator/freezer
 - Miele built-in/central cooktop
 - Miele electric conventional oven
 - Miele built-in dishwasher
 - Wine cooler with pull-out doors
 - Wine chiller in entry vestibule
 - Single-lever faucet with pull-out spray
- Laundry
 - Misting Neptune front-load washer
 - Misting Neptune front load electric dryer
- Pre-wiring for security systems
- Pre-wiring for cable-TV
- Left side-door wood entry doors
- Side-door wood interior doors



CONTINUUM
 ON SOUTH BEACH