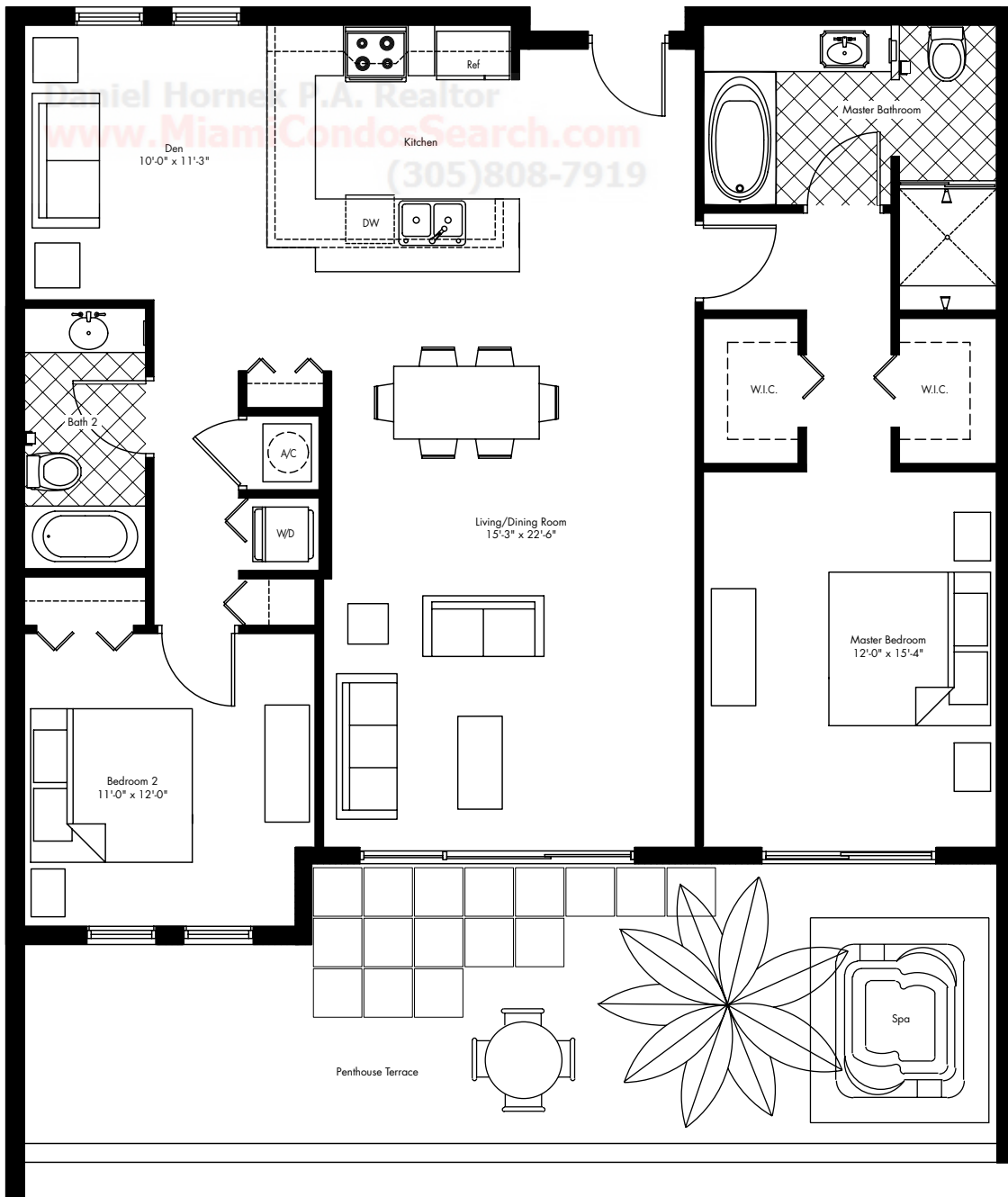


PENTHOUSE *J*



PH2	TOTAL AREA	2,076 Sq.Ft.	192.86 m ²
	TERRACE	611 Sq.Ft.	56.76 m ²
PH6	TOTAL AREA	1,931 Sq.Ft.	179.39 m ²
	TERRACE	466 Sq.Ft.	43.29 m ²
PH7	TOTAL AREA	1,814 Sq.Ft.	168.53 m ²
	TERRACE	349 Sq.Ft.	32.43 m ²
PH8	TOTAL AREA	1,896 Sq.Ft.	176.23 m ²
	TERRACE	431 Sq.Ft.	40.13 m ²
PH9	TOTAL AREA	2,207 Sq.Ft.	205.03 m ²
	TERRACE	742 Sq.Ft.	68.93 m ²



THE FEATURES CONTAINED ON THIS BROCHURE ARE REPRESENTATIVE ONLY AND THE DEVELOPER RESERVES THE RIGHT WITHOUT NOTICE OR APPROVAL OF THE BUYER TO MAKE SUBSTITUTIONS OF AT LEAST EQUAL QUALITY FOR FEATURES, MATERIALS AND EQUIPMENT ITEMIZED HEREIN. STATED DIMENSIONS ARE MEASURED TO THE EXTERIOR BOUNDARIES OF THE EXTERIOR WALLS AND THE CENTERLINE OF INTERIOR DEMISING WALLS, AND IN FACT VARY FROM THE DIMENSIONS THAT WOULD BE DETERMINED BY USING THE DESCRIPTION AND DEFINITION OF THE UNIT SET FORTH IN THE DECLARATION (WHICH GENERALLY ONLY INCLUDES THE INTERIOR AIRSPACE BETWEEN THE PERIMETER WALLS AND EXCLUDES INTERIOR STRUCTURAL COMPONENTS). DRAWINGS NOT TO SCALE. ALL DIMENSIONS ARE APPROXIMATE AND ALL FLOOR PLANS ARE SUBJECT TO CHANGE.