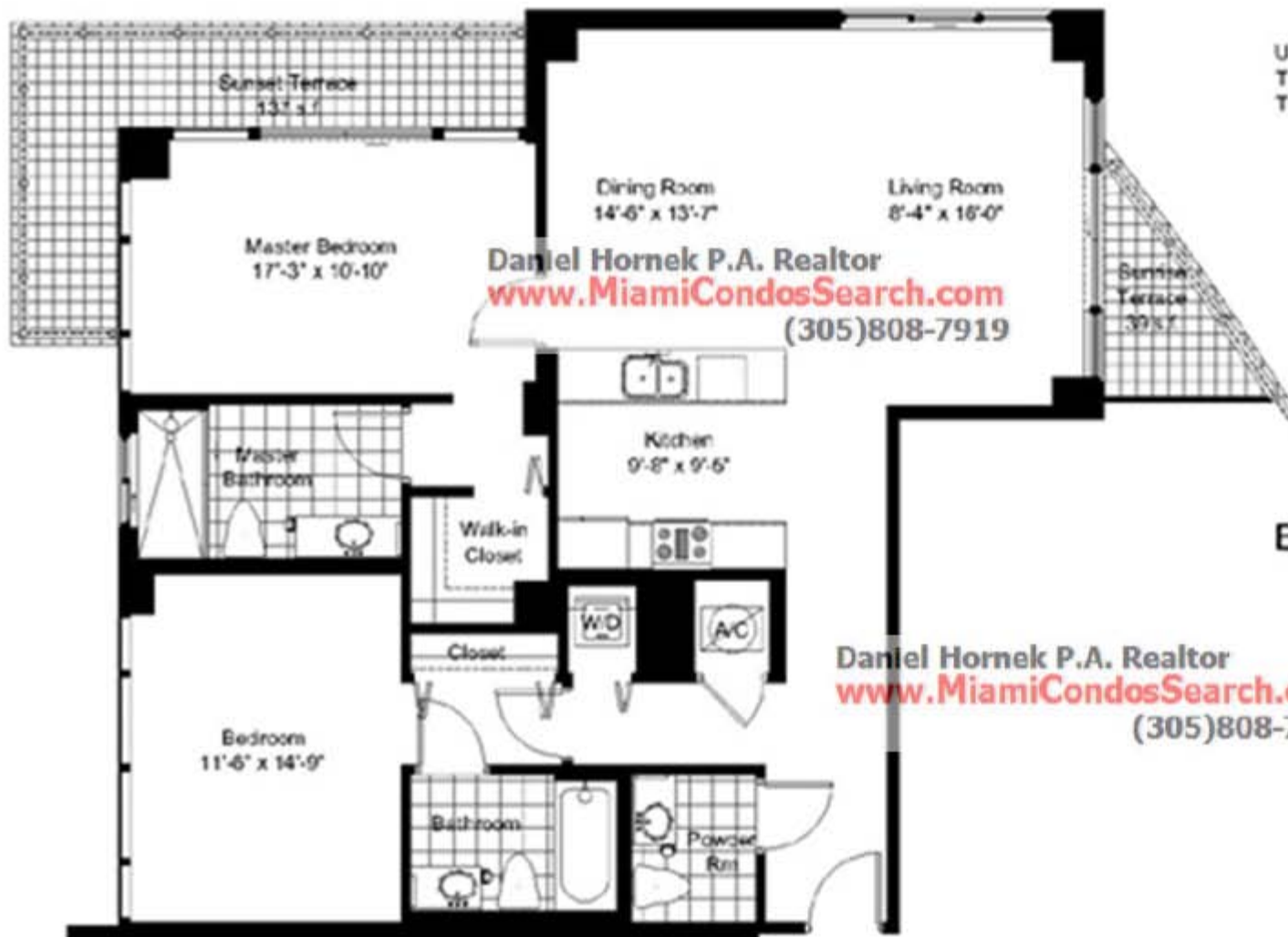


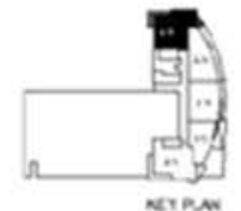
# UNIT 2-B

2 BEDROOM / 2 1/2 BATH

UNIT S.F.	1,368 s.f.
TERRACE S.F.	176 s.f.
TOTAL S.F.	1,544 s.f.



Biscayne Bay



KEY PLAN

9th thru 26th FLOOR (TOWER)



Unit : 1,368 sf

Terrace: 176 sf

Total Area: 1,544 sf

Living Room: 8'- 4" X 16'

Dining Room: 14'- 6" X 13'- 7"

Kitchen: 9'- 8" X 9'- 5"

Master Bedroom 1: 17'- 3" X 10'- 10"

Bedroom: 11'- 6" X 14'- 9"

Daniel Hornek P.A. Realtor  
[www.MiamiCondosSearch.com](http://www.MiamiCondosSearch.com)  
(305)808-7919

**NYX**  
ON THE BAY  
unit

# 2-B